

# fAdmin Settings

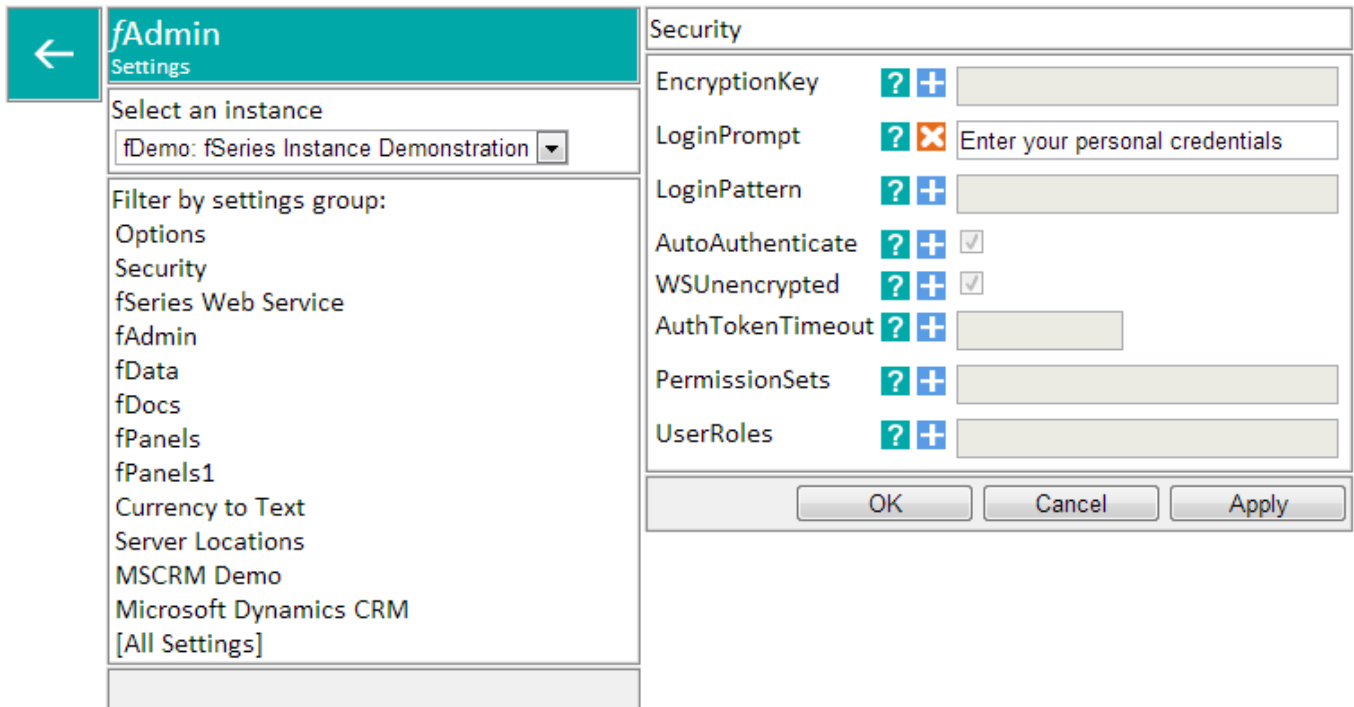
This section deals with system wide configuration settings. Settings are grouped into logical sets, or you can click on [All Settings] to see an alphabetical list of all available settings.

The screenshot shows the fAdmin Settings application interface. On the left, there is a sidebar with a teal header containing a back arrow and the text 'fAdmin Settings'. Below the header, there is a dropdown menu labeled 'Select an instance' with '[No Instance]' selected. Underneath is a section titled 'Filter by settings group:' with a list of categories: Options, Security, fSeries Web Service, fAdmin, fData, fDocs, fPanels, fPanels1, Currency to Text, Server Locations, MSCRM Demo, Microsoft Dynamics CRM, and [All Settings]. The 'Security' group is highlighted. The main area on the right is titled 'Security' and contains several settings, each with a help icon (a question mark in a teal square) and a text input field: EncryptionKey, LoginPrompt (with the text 'Please enter your fSeries credentials'), LoginPattern, AutoAuthenticate (with a checked checkbox), WSUnencrypted (with a checked checkbox), AuthTokenTimeout, SecurityGroup, PermissionSets, and UserRoles. At the bottom of the main area are three buttons: 'OK', 'Cancel', and 'Apply'.

In this case, the Security group has been selected. Most settings will have an associated help description to guide you as to how to use the setting. Also, many settings have defaults that the software will use if no value is set. It is recommended that you use defaults wherever possible.

Note that settings take effect as soon as you click "OK" or "Apply".

If an instance is selected, the display is slightly different:



Now each setting has an extra icon alongside:

+	Indicates that the setting uses the default, but an instance may be added by clicking here
✗	Indicates that the setting is overridden for this instance, but that it may be reset to the default by clicking here

If a setting uses the default, its entry is disabled and greyed out. It will become active if you request it to be overridden.